

CANDIDATE
NAME

--

CENTRE
NUMBER

--	--	--	--	--

CANDIDATE
NUMBER

--	--	--	--



CHILD DEVELOPMENT

0637/01

Paper 1

May/June 2016

2 hours

Candidates answer on the Question Paper.

No Additional Materials are required.

READ THESE INSTRUCTIONS FIRST

Write your Centre number, candidate number and name on all the work you hand in.

Write in dark blue or black pen.

You may use an HB pencil for any diagrams or graphs.

Do not use staples, paper clips, glue or correction fluid.

DO NOT WRITE IN ANY BARCODES.

Section A and Section B

Answer **all** questions.

Section C

Answer **one** question.

Write your answers in the spaces provided on the Question Paper.

At the end of the examination, fasten all your work securely together.

The number of marks is given in brackets [] at the end of each question or part question.

This document consists of **12** printed pages, **3** lined pages and **1** blank page.

Section A

Answer **all** questions.

- 1 Hereditary factors can impact upon children’s development.

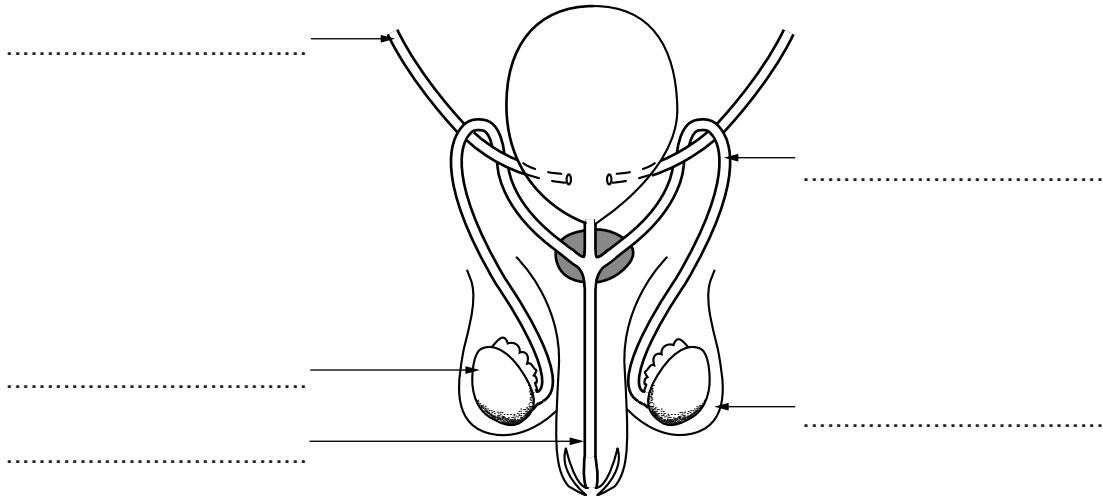
Define the term ‘hereditary’.

.....
.....
.....[2]

- 2 Give **one** reason why a couple may undergo genetic counselling.

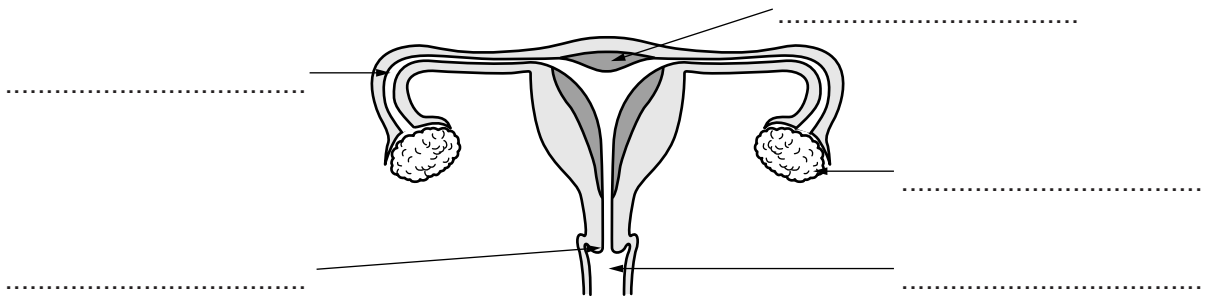
.....
.....[1]

3 (a) Label each part of the reproductive system where indicated.



[5]

(b) Label each part of the reproductive system where indicated.



[5]

4 Give **three** possible signs which might indicate that an expectant mother is in labour.

- 1
- 2
- 3

[3]

5 Often, new-born babies are examined by a paediatrician.

Give **six** possible checks the paediatrician may carry out on the new-born baby.

1

.....

2

.....

3

.....

4

.....

5

.....

6

.....

[6]

6 Give **three** ways that parents and carers can help children adjust to having their teeth brushed for the first time.

1

.....

2

.....

3

.....

[3]

7 Give **five** safety measures children should take when crossing the road.

1

.....

2

.....

3

.....

4

.....

5

.....

[5]

[Total: 30 marks]

Section B

Answer **all** questions.

8 (a) The role of courtship is to unite two people together.

Explain **three** different types of partnerships people might choose.

1

.....

.....

.....

.....

2

.....

.....

.....

.....

3

.....

.....

.....

.....

.....

[9]

- (b) Complete the table below to describe how each factor might affect the decision to have children.

An example has been given for you.

Factor	How it affects decision to have children
<i>Responsibility</i>	<i>Couples may feel unready to commit fully to each other or to being able to raise a child.</i>
Health	
Age	
Home	
Earnings	
Career	

[10]

(c) Having someone familiar present while giving birth supports the mother.

State **six** reasons why mothers might have someone other than the father present for support while giving birth.

- 1
-
- 2
-
- 3
-
- 4
-
- 5
-
- 6
-

[6]

(d) Position within the family might have an effect upon a child's emotions and personality.

Describe **three** ways that being part of a large family may affect children's emotional development.

- 1
-
- 2
-
- 3
-

[3]

- 9 (a) As children grow in age and ability, the way they play changes too.

Complete the table below to describe the ways a baby up to the age of two years and a child aged four years may play for each.

An example is given for you.

Type of play	Baby (up to two years)	Four year old
<i>Exploratory</i>	<i>Will explore their own hands and feet closely and may put them into their mouths.</i>	<i>Will enjoy looking at how things grow, such as plants and animals.</i>
Physical		
Imaginary		
Imitative		

[6]

(b) Describe **two** suitable natural resources and **two** suitable man-made resources which a four year old might enjoy playing with. Describe how each could benefit a child's learning.

Natural

1

Benefit for learning

.....

.....

2

Benefit for learning

.....

.....

Man-made

1

Benefit for learning

.....

.....

2

Benefit for learning

.....

.....

[8]

(c) Explain why it is important for toys to have safety standards.

.....
.....
.....
.....
.....
.....
.....
.....
.....
.....[4]

(d) Describe **two** play facilities which children might enjoy outside of the home and why children might enjoy playing there.

1

.....
.....
.....
.....

2

.....
.....
.....
.....

[4]

[Total: 50 marks]

Section C

Answer **one** question.

Write your answer on the following pages.

- 10 (a)** In order to develop arithmetical skills children need to learn about numbers.

Discuss fun ways parents and carers can help children to learn how to count, recognise numbers and compare quantities.

Explain how each helps children to become aware of mathematics.

Or

- (b)** Learning simple first aid can help to treat injuries and prevent them from getting worse.

Discuss in detail the first aid for cuts, bruises and choking.

Explain items found in a first aid kit for treating minor injuries and their purpose.

[Total: 20 marks]

.....
.....
.....
.....
.....
.....
.....
.....
.....
.....
.....
.....
.....
.....
.....
.....
.....
.....
.....
.....
.....
.....
.....
.....
.....
.....
.....
.....
.....
.....
.....
.....
.....
.....
.....
.....
.....
.....
.....
.....
.....
.....
.....
.....
.....
.....
.....
.....
.....
.....

BLANK PAGE

Permission to reproduce items where third-party owned material protected by copyright is included has been sought and cleared where possible. Every reasonable effort has been made by the publisher (UCLES) to trace copyright holders, but if any items requiring clearance have unwittingly been included, the publisher will be pleased to make amends at the earliest possible opportunity.

To avoid the issue of disclosure of answer-related information to candidates, all copyright acknowledgements are reproduced online in the Cambridge International Examinations Copyright Acknowledgements Booklet. This is produced for each series of examinations and is freely available to download at www.cie.org.uk after the live examination series.

Cambridge International Examinations is part of the Cambridge Assessment Group. Cambridge Assessment is the brand name of University of Cambridge Local Examinations Syndicate (UCLES), which is itself a department of the University of Cambridge.