

MARK SCHEME for the May/June 2010 question paper
for the guidance of teachers

**0417 INFORMATION AND COMMUNICATION
TECHNOLOGY**

0417/03

Paper 3 (Practical Test B), maximum raw mark 80

This mark scheme is published as an aid to teachers and candidates, to indicate the requirements of the examination. It shows the basis on which Examiners were instructed to award marks. It does not indicate the details of the discussions that took place at an Examiners' meeting before marking began, which would have considered the acceptability of alternative answers.

Mark schemes must be read in conjunction with the question papers and the report on the examination.

- CIE will not enter into discussions or correspondence in connection with these mark schemes.

CIE is publishing the mark schemes for the May/June 2010 question papers for most IGCSE, GCE Advanced Level and Advanced Subsidiary Level syllabuses and some Ordinary Level syllabuses.



Page 2	Mark Scheme: Teachers' version	Syllabus	Paper
	IGCSE – May/June 2010	0417	03

Candidate name, Centre number, candidate number

```
<HTML>
<HEAD>
  <TITLE>Relaxing Holiday Company - June 2010</TITLE>
  <link rel="stylesheet" type="text/css" href="JXstyles1.css">
</HEAD>
<BODY>
```

Correct stylesheet attached
Must be relative referencing
1 mark

```
<a name="START"></a>
```

Anchor START
Can be in first cell of table
Upper case
Not visible on page
1 mark

```
<TABLE width="100%" id="top">
  <TR align="center" valign="center">
    <TD colspan="4"></TD>
  </TR>
```

Table Width 100% 1 mark

```
<TR>
  <TD colspan="4">
    <h3>Last edited by Candidate name, centre number, candidate number
  </TD>
</TR>
```

```
<TR>
  <TD>
    <h2>Sun
  </TD>
  <TD>
    <h2>Sea
```

```
</TD>
  <TD>
    <h2>Sand
```

Hyperlink Snow
To anchor SNOWZONE
Upper case and wrong checklist
1 mark
1 mark

```
<h2><a href="#SNOWZONE">Snow</a>
```

Table Width 90% 1 mark

```
</TD>
</TR>
</TABLE>
```

```
<TABLE width="90%" align="center" id="middle">
  <TR>
    <TD rowspan="3"></TD>
    <TD><h3>We offer holidays to suit your every need. We can often make dreams come true.</TD>
  </TR>
```

```
<TR>
  <TD><h3>Let us arrange your holiday for you. We will collect you from your home and offer the best service of any holiday company in the world.</TD>
</TR>
```

```
<TR>
  <TD><h3>Combine our service with superb value for money. Contact us with your requirements and we are sure that we will not disappoint you.</TD>
</TR>
</TABLE>
```

Table Width 100% 1 mark

```
<TABLE width="100%" id="bottom">
  <TR>
    <TD>
      <h2>
    </TD>
```

Target _sea
Case as shown to JXSEA.HTM
Ignore case
Accept base target placed in head of page
1 mark
1 mark

```
<h2><a href="JXSEA.HTM" target="_sea">
  </TD>
</TR>
</TABLE>
```

Page 3	Mark Scheme: Teachers' version	Syllabus	Paper
	IGCSE – May/June 2010	0417	03

`<h2>`

`</TD>`
`</TR>`
`<TR align="center" valign="center">`
`<TD colspan = "4"> </TD>`
`</TR>`
`<TR>`

Target	Phone image as link JXImg6 only Penalise for absolute image reference	1 mark
	Correct mailto:	1 mark
	Ignore case	

``

`<TD colspan = "4">`
`<h1> Try RHC Snowzone</h1>`
`<h3> Why not relax with a chilling winter holiday on the`
both short haul and long haul and can offer some of the best chalets for the ultimate luxury. Leave the slopes and return prepared for you by one of the world finest chefs. You will not find these holidays in any brochure, each holiday is unique to your requirements. Contact us using the link above for further details.`</h3>`
`</TD>`
`</TR>`
`<TR>`
`<TD colspan = "4">`

Anchor	SNOWZONE Case as shown No extra text	1 mark
---------------	--	---------------

`<h2>Click Here to return to the top of the page.</h2>`

`</TD>`
`</TR>`
`</TABLE>`
`</BODY>`
`</HTML>`

Hyperlink	Click Here Click Here only Rest of text intact	1 mark
	Returns to start	1 mark
	Allow follow through on name	

Page 4	Mark Scheme: Teachers' version	Syllabus	Paper
	IGCSE – May/June 2010	0417	03

Top left
 Last edited by & name & No's
 Any order for name and numbers
 1 mark

Top table
 From JXTOP.htm
 Table must be fully visible
 1 mark



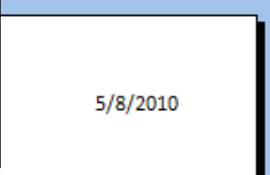
Middle table 3 rows and 2 columns
 Merged cells in column 1
 Table centre aligned in window
 Award only if tables fully visible
 Correct text each cell
 Can check in markup if needed
 Style h3
 JXHARBOUR.JPG left cell
 1 mark
 1 mark
 1 mark
 1 mark
 1 mark
 1 mark
 1 mark
 NEW SCREENSHOT



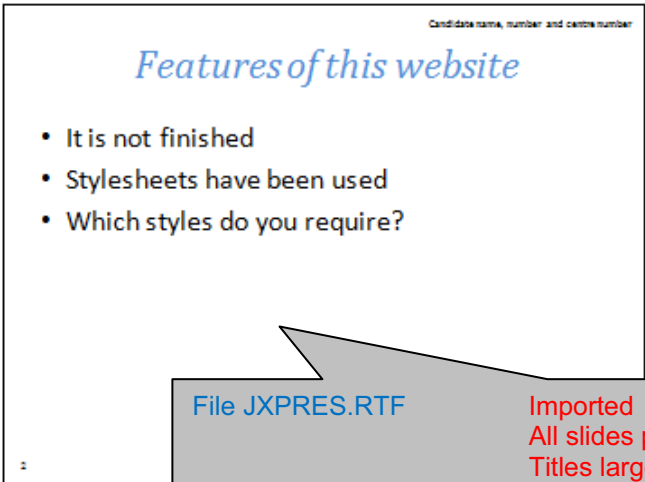
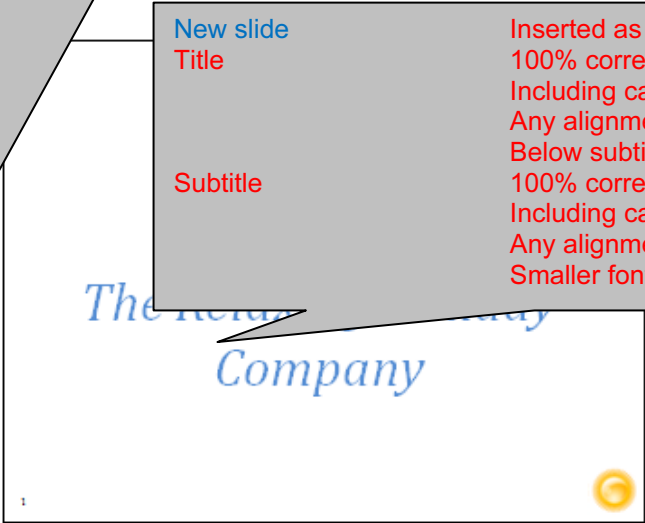
- | | | |
|--------------|------------------------------|--------|
| Bottom table | From JXBOTTOM.htm | 1 mark |
| | Table must be fully visible | |
| | Sun image left | 1 mark |
| | Sea image 2nd | 1 mark |
| | Sand image 3rd | 1 mark |
| | Phone image right | 1 mark |
| | Sun resized to 160 & aspect | 1 mark |
| | Sand resized to 160 & aspect | 1 mark |

Page 6	Mark Scheme: Teachers' version	Syllabus	Paper
	IGCSE – May/June 2010	0417	03

Master slide – CHECK CONSISTENCY		
Background	White, slide numbers bottom left Left 1/3 of slide	1 mark
Name, cand no, Centre no	Top right black, 12pt, serif Right 1/2 of slide	1 mark
Image	Sun – bottom right Must not be source files – flexible Right 1/3 of slide	1 mark
Master slide items	Not overlapping any object Not touching and all present	1 mark



New slide	Inserted as first slide	1 mark
Title	100% correct Including case, can be on single line Any alignment/No bullet points Below subtitle	1 mark 1 mark
Subtitle	100% correct Including case, can be on single line Any alignment/No bullet points Smaller font than title	1 mark 1 mark




File JXPRES.RTF	Imported All slides present and intact Titles larger than bullets and consistent style (fonts/bullets)	1 mark 1 mark
	Bulleted lists consistent style Size may vary from slide to slide	1 mark

5/8/2010

Candidate name, number and centre number

Background


- Background colour can be added to stylesheets
- Background images can be added to stylesheets



Candidate name, number and centre number

Stylesheet JXstyle1.css

- The background image in JXstyle1.css does not work because:
 - File not present in current directory or filename incorrect
- The html code to make the background colour show is:
 - `body {background-color: #025fb4 }`
- The text for h1 and h2 is not white and h3 is not yellow because:
 - No green element in hexadecimal colour code



2

Slide 4

Answer 1 File not present/misnamed 1 mark

Not in current directory/folder

Text 'answer n here' has been replaced 1 mark

Must be all

Answer 2 Body {} 1 mark

Background-color: #025fb4 1 mark

e.g. `body {background-image: url(j9sunset.jpg); background-color: #025fb4}`

Answer 3 No green element 1 mark

Accept hex with FF for middle 2 digits

In hexadecimal/colour code/definition 1 mark

5/8/2010

Spacing

- The cell spacing has changed between JXstyle1.css and JXstyle2.css
- Cell padding is:
 - Space between the text and the cell wall inside a cell of a table
- Cell spacing is:
 - Space between the walls of 2 adjacent cells

Slide 5

Answer 4

Space between text and cell wall

Inside/in table/cell

Interchange cell wall and border

Answer 5

Space between

Walls of 2 adjacent cells

Interchange cell wall and border

Printed

2 slides per page

1 mark

3

Page 10	Mark Scheme: Teachers' version	Syllabus	Paper
	IGCSE – May/June 2010	0417	03

Destination	Code	Trips
Bahamas	BAH	7
Cozumel	COZ	7
Egypt	EGY	16
India	IND	13
Maldives	MAL	11
Sri Lanka	SRI	8
Thailand	THA	12

Row 1, 10, 24 Centre aligned
Only three rows shown
Bold and italic
Orientation Portrait
1 mark
1 mark
1 mark

Month	Mcode	Days
January	1	28
February	2	31
March	3	42
April	4	69
May	5	104
June	6	80
July	7	77
August	8	55
September	9	83
October	10	66
November	11	125
December	12	70

Day	Month	Year	DCode	Discount	Duration
27	9	2010	EGY	Y	10
14	8	2010	MAL	N	14
21	8	2010	THA	N	7
2	8	2010	COZ	Y	10
10	5	2010	SRI	Y	14
27	5	2010	BAH	N	21
28	9	2010	IND	N	14
21	4	2010	IND	N	10
2	12	2010	COZ	Y	14
16	5	2010	EGY	Y	14
18	11	2010	SRI	Y	21
4	7	2010	EGY	Y	7
11	3	2010	THA	N	7
3	4	2010	COZ	Y	14
5	6	2010	COZ	Y	7
3	10	2010	IND	N	14
1	6	2010	MAL	N	14
19	6	2010	THA	N	14
23	11	2010	SRI	N	14
5	7	2010	THA	Y	14
1	6	2010	EGY	N	14
23	12	2010	MAL	Y	7

Page 11	Mark Scheme: Teachers' version				Syllabus	Paper
	IGCSE – May/June 2010				0417	03

21	10	2010	IND	N	14
14	11	2010	MAL	N	10
1	3	2010	BAH	Y	7
3	1	2010	COZ	Y	14
17	9	2010	THA	N	14
2	5	2010	SRI	N	10
14	8	2010	THA	Y	7
31	7	2010	THA	Y	14
7	5	2010	EGY	N	7
15	5	2010	EGY	Y	14
17	8	2010	SRI	Y	7
21	1	2010	BAH	N	7
29	12	2010	MAL	Y	14
5	11	2010	THA	Y	21
23	11	2010	MAL	Y	14
29	9	2010	IND	Y	7
29	0	2010	EGY	N	14
27	10	2010	BAH	Y	7
18	8	2010	IND	Y	10
28	7	2010	BAH	Y	14
3	10	2010	MAL	N	10
19	0	2010	EGY	Y	10
19	3	2010	BAH	N	14
4	6	2010	EGY	Y	21
12	4	2010	SRI	Y	10
4	11	2010	EGY	Y	14
30	5	2010	IND	N	14
26	9	2010	IND	N	14
10	4	2010	MAL	Y	14
29	9	2010	EGY	Y	10
26	10	2010	IND	N	14
7	11	2010	MAL	Y	14
7	12	2010	THA	N	14
14	12	2010	IND	N	7
5	6	2010	COZ	N	10
25	5	2010	EGY	Y	10
14	7	2010	SRI	Y	14
12	2	2010	IND	Y	14
11	1	2010	EGY	Y	7
5	3	2010	THA	N	14
22	7	2010	IND	N	7
23	4	2010	IND	Y	14
24	12	2010	THA	Y	14
20	2	2010	THA	Y	7
4	11	2010	MAL	N	10
19	10	2010	EGY	N	7
13	9	2010	EGY	N	7

Page 12	Mark Scheme: Teachers' version	Syllabus	Paper
	IGCSE – May/June 2010	0417	03

17	9	2010	MAL	Y	7
29	4	2010	EGY	Y	7
20	2	2010	COZ	N	10
30	11	2010	SRI	Y	7
15	7	2010	BAH	Y	7

<i>DCode</i>	<i>Discount</i>	<i>Duration</i>
EGY	Y	10
EGY	Y	14
EGY	Y	7
EGY	Y	14
EGY	Y	10
EGY	Y	21
EGY	Y	14
EGY	Y	10
EGY	Y	10
EGY	Y	7
EGY	Y	7

Search	DCode = EGY and Discount = Y	1 mark
Rows	1–23 hidden	1 mark
Columns	A, B, C Hidden	1 mark