



UNIVERSITY OF CAMBRIDGE INTERNATIONAL EXAMINATIONS  
International General Certificate of Secondary Education

CANDIDATE  
NAME

CENTRE  
NUMBER

--	--	--	--	--

CANDIDATE  
NUMBER

--	--	--	--

\* 5 8 4 8 6 9 5 7 3 2 \*

**Biology**

**0610/52**

Paper 5 Practical Test

**May/June 2011**

**1 hour**

Candidates answer on the Question Paper

Additional Materials: As listed in the Confidential Instructions

**READ THESE INSTRUCTIONS FIRST**

- Write your Centre number, candidate number and name on all the work you hand in.
- Write in dark blue or black pen.
- You may use a pencil for any diagrams or graphs.
- Do not use staples, paper clips, highlighters, glue or correction fluid.
- DO NOT WRITE IN ANY BARCODES.**

Answer **both** questions.

At the end of the examination, fasten all your work securely together.  
The number of marks is given in brackets [ ] at the end of each question or part question.

For Examiner's Use	
1	
2	
<b>Total</b>	

This document consists of **10** printed pages and **2** blank pages.



1 You are going to carry out a test for vitamin C.

You are provided with three vitamin C solutions, **S1**, **S2** and **S3**.

**S1** has a concentration of 0.2% vitamin C.

**S2** has a concentration of 0.05% vitamin C.

The concentration of **S3** is not known.

**Read all the instructions before you begin work.**

*Proceed as follows:*

- Measure 1 cm<sup>3</sup> of starch solution into a test-tube.
- Add 1 cm<sup>3</sup> of solution **S1**.
- Shake gently to mix.

**Prepare a table in which to record your observations, in the space in question 1(a).**

You are going to add iodine solution to the mixture, drop by drop.

You should count every drop that you add.

- Add one drop of iodine solution and shake gently to mix.
- Keep adding iodine solution, drop by drop, until a blue colour appears. This is the end-point for solution **S1**.
- Repeat the test on solutions **S2** and **S3**.

**(a)** Record your observations in the table that you have prepared.

[5]

(b) Use your results to suggest the approximate vitamin C concentration of **S3**.

Give reasons for your answer.

.....  
.....  
.....  
.....  
.....  
..... [3]

(c) Suggest **four** ways in which you could improve this method to find the concentration of an unknown vitamin C solution.

1. ....  
.....  
2. ....  
.....  
3. ....  
.....  
4. ....  
..... [4]

*For  
Examiner's  
Use*

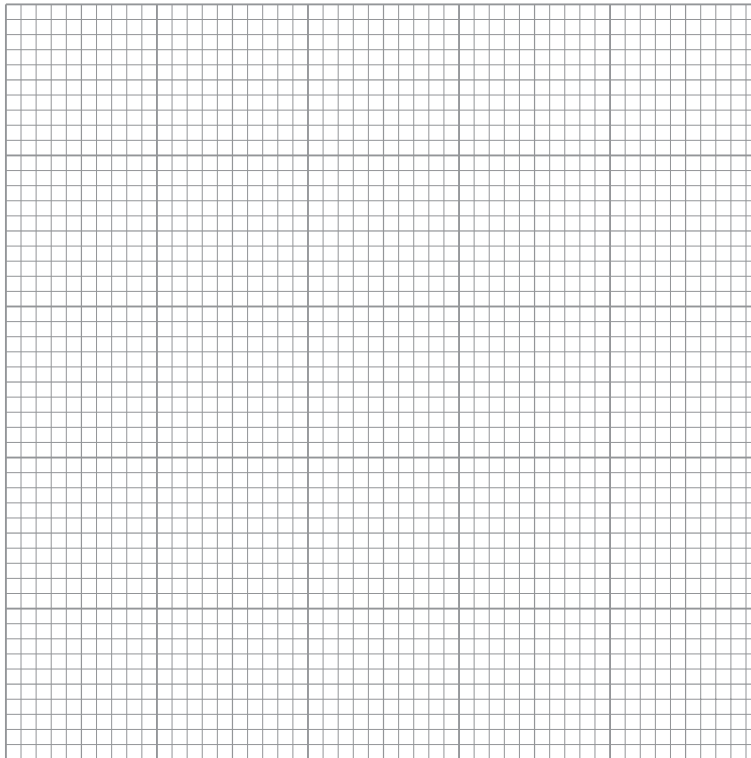
- (d) Fig. 1.1 shows the results of a similar investigation into the concentration of vitamin C in five fruit juices. The numbers are the number of drops of iodine solution used to reach the end-point for each fruit juice.

For  
Examiner's  
Use

Blackcurrant 48	Pineapple 5
Orange 16	Lemon 12
Strawberry 22	

**Fig. 1.1**

- (i) On the grid below plot the data from Fig. 1.1 to show the variation in the number of drops of iodine solution required to reach the end-point.



[5]

- (ii) State which fruit juice has the highest concentration of vitamin C.

..... [1]

(iii) Explain how you used the results in (a) and the fruit juice data to decide which fruit juice has the highest concentration of vitamin C.

*For  
Examiner's  
Use*

.....

.....

.....

..... [2]

[Total: 20]

2 Fig. 2.1 shows a photograph of the larva of an insect.



Fig. 2.1

(a) (i) In the space below make a large drawing of the larva shown in Fig. 2.1.

Labels are **not** needed.

For  
Examiner's  
Use

[5]

(ii) Measure the length of the larva in Fig. 2.1 and in your drawing.

*length of larva in Fig. 2.1* .....

*length of larva in your drawing* ..... [2]

(iii) Calculate the magnification of your drawing compared with the larva in Fig. 2.1.

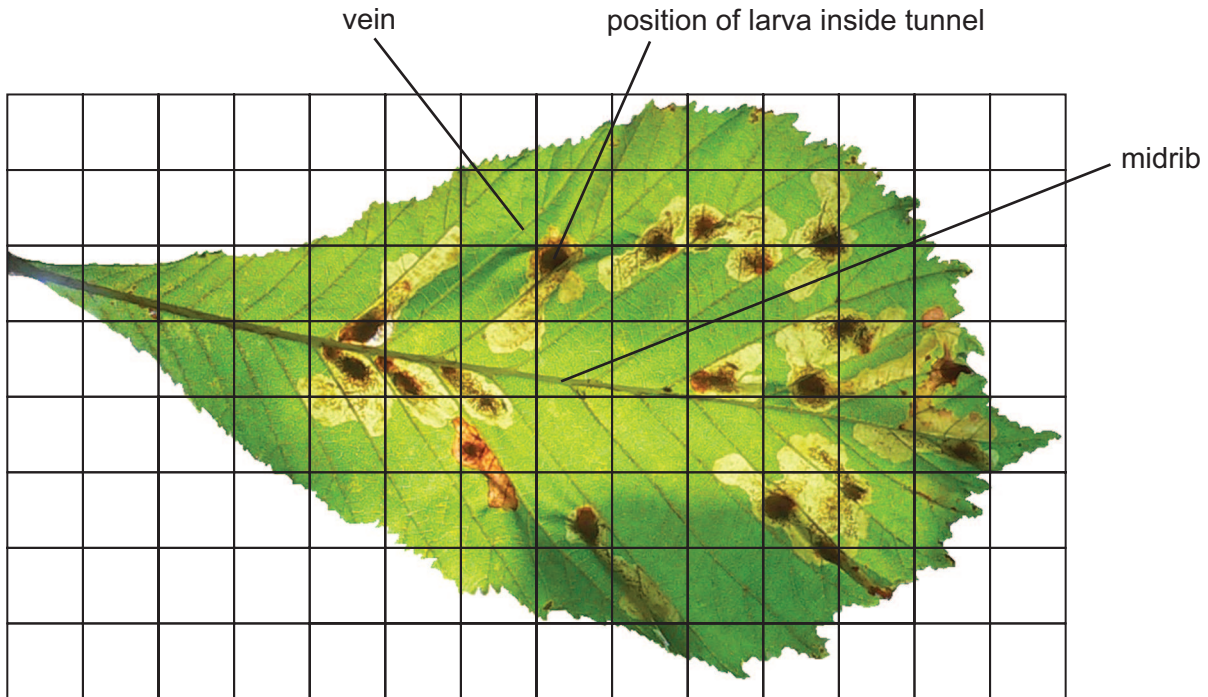
Show your working.

magnification ..... [2]

(b) The larva eats through leaf tissue making tunnels in which it lives.

Fig. 2.2 shows part of a leaf that has been damaged by these tunnels.

For  
Examiner's  
Use



**Fig. 2.2**

(i) Calculate the percentage of the leaf area which has been damaged by the tunnels.

Show your working.

answer .....% [3]



(ii) Suggest and explain why the tunnels do not extend across the leaf midrib.

.....  
.....  
.....  
..... [2]

(iii) Suggest two reasons why the leaf in Fig. 2.2 may die and fall off.

1. ....  
.....  
2. ....  
..... [2]

*For  
Examiner's  
Use*

(c) The larva in Fig. 2.1 becomes a moth.

Fig. 2.3 and Fig. 2.4 show the moth.



Fig. 2.3

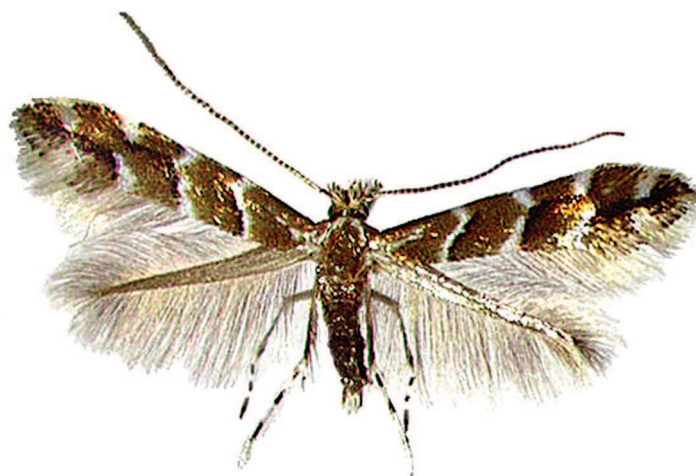


Fig. 2.4

Look at Fig. 2.3 and Fig. 2.4.

(i) State **one** visible feature of this moth which is used to classify it as an arthropod.

..... [1]

(ii) State three visible features of this moth which are used to classify it as an insect.

1. ....

2. ....

3. .... [3]

[Total: 20]



**BLANK PAGE**

---

Permission to reproduce items where third-party owned material protected by copyright is included has been sought and cleared where possible. Every reasonable effort has been made by the publisher (UCLES) to trace copyright holders, but if any items requiring clearance have unwittingly been included, the publisher will be pleased to make amends at the earliest possible opportunity.

University of Cambridge International Examinations is part of the Cambridge Assessment Group. Cambridge Assessment is the brand name of University of Cambridge Local Examinations Syndicate (UCLES), which is itself a department of the University of Cambridge.