



UNIVERSITY OF CAMBRIDGE INTERNATIONAL EXAMINATIONS  
International General Certificate of Secondary Education

CANDIDATE  
NAME

CENTRE  
NUMBER

--	--	--	--	--

CANDIDATE  
NUMBER

--	--	--	--

\* 6 2 4 9 3 8 5 7 0 2 \*

**Biology**

**0610/53**

Paper 5 Practical Test

**October/November 2011**

**1 hour 15 mins**

Candidates answer on the Question Paper

Additional Materials: As listed in the Confidential Instructions

**READ THESE INSTRUCTIONS FIRST**

Write your Centre number, candidate number and name on all the work you hand in.

Write in dark blue or black pen.

You may use a pencil for any diagrams or graphs.

Do not use staples, paper clips, highlighters, glue or correction fluid.

DO **NOT** WRITE IN ANY BARCODES.

Answer **both** questions.

At the end of the examination, fasten all your work securely together.

The number of marks is given in brackets [ ] at the end of each question or part question.

For Examiner's Use	
1	
2	
<b>Total</b>	

This document consists of **8** printed pages.



1 You are provided with part of a fruit labelled **Y1** .

(a) Make a large, labelled diagram of the fruit to show

- the arrangement of the seeds,
- the thickness of the fruit wall.

*For  
Examiner's  
Use*

[5]

- Remove one seed.

(b) Describe the **external** appearance of this seed.

.....  
 ..... [2]

(c) (i) Describe how you could carry out food tests on the internal structure of the seed to show if the food material stored by the seed contained any of the following.

*fat* .....

.....  
 .....

*starch* .....

.....  
 ..... [4]

- Remove three more seeds.
- Remove the testa (seed coat) from each seed.

(ii) Test the internal structure of the seeds for fat and starch.  
 Record your observations and conclusion in Table 1.1.

**Table 1.1**

test	initial observation	final observation	conclusion
fat	.....	.....	.....
starch	.....	.....	.....

[4]

These seeds can germinate, grow, flower and produce seeds within one year.

For  
Examiner's  
Use

Fig. 1.1 shows a seedling which has grown from a seed taken from fruit Y1.

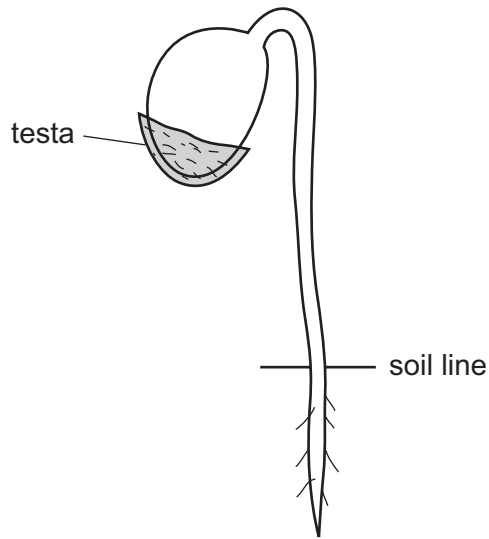


Fig. 1.1

(d) (i) Complete the labelling of the seedling on Fig. 1.1.  
The testa of this seedling has been labelled for you. [2]

(ii) Describe how you would germinate these seeds.  
Include the environmental conditions required.

.....  
.....  
.....  
.....  
.....  
..... [3]

[Total: 20]

2 You are provided with two pieces of potato. These are long thin strips which will be called 'chips'.

The chips were cut to measure 60 mm in length.

One chip is in a concentrated salt (sodium chloride) solution, labelled **salt solution**.

The other chip is in distilled water, labelled **distilled water**.

- Remove the chip from the salt solution.
- Carefully blot it dry using a paper towel.
- Place the chip on the black card.

(a) (i) Measure the length of this chip and record it below.  
Record any change in length from the original 60 mm.

*length* .....

*change* ..... [2]

(ii) Describe the appearance and texture of this chip.

.....  
.....  
..... [2]

- Remove the other chip from the distilled water.
- Carefully blot it dry using a paper towel.
- Place the chip on the black card.

(b) (i) Measure the length of this chip and record it below.  
Record any change in length from the original 60 mm.

*length* .....

*change* ..... [2]

(ii) Describe the appearance and texture of this chip.

.....  
.....  
..... [2]



- (d) (i) Complete Table 2.1 by calculating the percentage change in mass for the most concentrated solution. Show your working. Write your answer in Table 2.1.

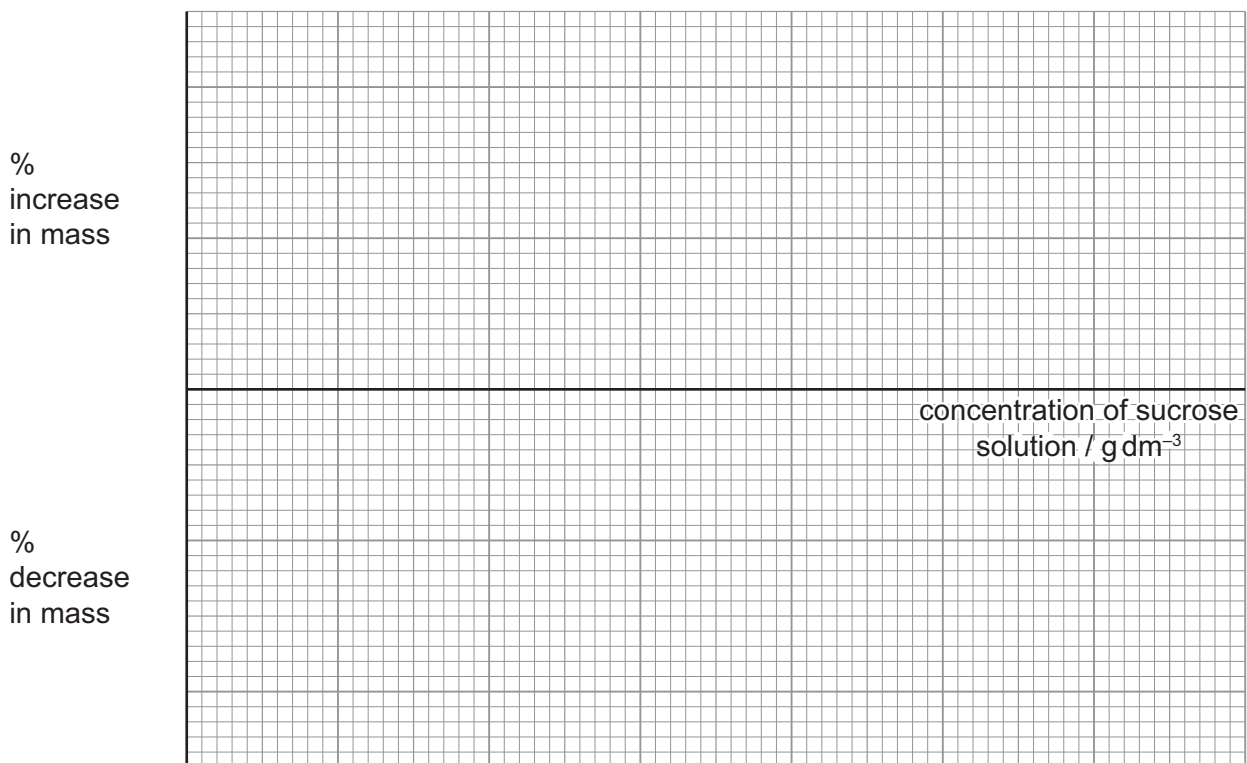
For  
Examiner's  
Use

- (ii) Suggest why it is necessary to calculate the percentage change in mass when comparing the chips. [1]

.....

..... [1]

- (iii) Plot a graph to show the percentage change in mass against the concentration of sucrose solution. Use the grid and axes provided.



[4]

- (e) (i) Use your graph to find the concentration of sucrose solution in which the mass of the chip would stay the same.

For  
Examiner's  
Use

.....  $\text{g dm}^{-3}$  [1]

- (ii) Explain why the mass would stay the same.

.....  
.....  
..... [1]

[Total: 20]

Permission to reproduce items where third-party owned material protected by copyright is included has been sought and cleared where possible. Every reasonable effort has been made by the publisher (UCLES) to trace copyright holders, but if any items requiring clearance have unwittingly been included, the publisher will be pleased to make amends at the earliest possible opportunity.

University of Cambridge International Examinations is part of the Cambridge Assessment Group. Cambridge Assessment is the brand name of University of Cambridge Local Examinations Syndicate (UCLES), which is itself a department of the University of Cambridge.