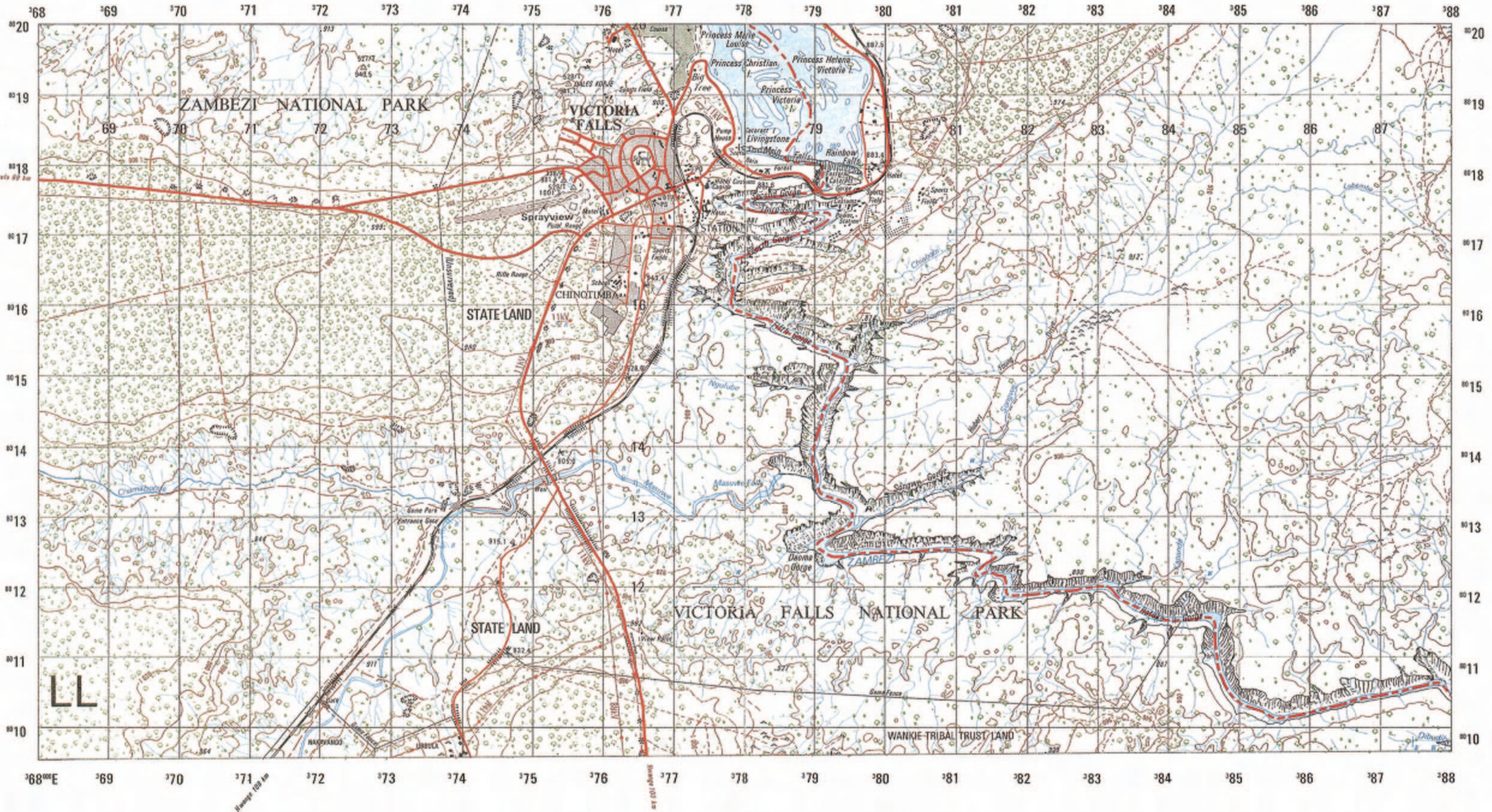


VICTORIA FALLS (ZIMBABWE)

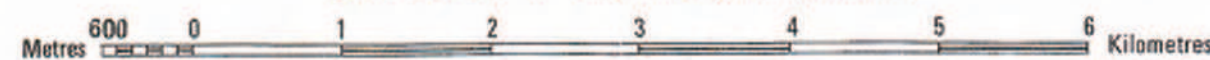


Compiled by Stereoplotter from Air Photography dated 1974
 Revised from Air Photography dated 1977
 Published by the Surveyor-General, Zimbabwe, 1980
 Printed by the Government Printer, Zimbabwe, 1980

NUMBERED LINES INDICATE THE 1 000 METRE UNIVERSAL TRANSVERSE MERCATOR GRID, ZONE 35K MODIFIED CLARKE 1880 (S.A.) SPHEROID

Heights are in metres above Mean Sea Level

Scale 1:50 000 or 2 centimetres to 1 kilometre



Users noting errors or omissions on this map should notify the Surveyor-General, P.O. Box 8093, Causeway, Zimbabwe. Copyright reserved by the Government of Zimbabwe

REFERENCE

City, Town	HARARE, BINDURA
Village, Business Centre	MBERENGWA, FENGA B.C.
Boundary, International	— — — — —
• Cadastral, Original Grant	— — — — —
• Subdivision	— — — — —
Road, Wide Tared	— — — — —
• Narrow Tared	— — — — —
• Gravel or Earth Bridge	— — — — —
• other	— — — — —
Track, Cut Line or Game Trail	— — — — —
Airplane Landing Area Registered, Unregistered	INYATI
Railway, with Embankment, Cutting, Tunnel	— — — — —
Mast	▲
Trigonometrical Station and Height in metres to top of pillar	▲ 158.9 ▲ 1 150.0
International Boundary Beacon, Magnetic Station	▲ 60A
Unmarked Spot Height Ground Survey, Photogrammetric	• 1 272 • 1 173
Power Line, 33kV and above, approximate alignment	— 33kV —
Huts, Staff Quarters	— — — — —

Built-up Area, Buildings	— — — — —
Church	— — — — —
Old Tank	— — — — —
Hill name	DOMBOSHAWA
Mine Name	Copper Queen
National Monument or Place of Historical Interest	— — — — —
Police Station, Post Office, Post and Telegraph Agency	PS PO PTA
District Administration Office	DAO

Refer to this map
VICTORIA FALLS 1725D4
 Edition 3

Five colours should appear below; if not then please return to the invigilator.



REFERENCE

River, Watercourse	— — — — —
Dam	— — — — —
Lake	— — — — —
Pan, Small, Large, Waterhole	— — — — —
Rapid, Waterfall	— — — — —
Well, Spring, Borehole, Windpump, Reservoir	— — — — —
Furrow, Pipeline	— — — — —
Seasonal Marsh	— — — — —
Contours at 20 metre Vertical Interval, with Cliff Feature	— — — — —
Depression, Sand	— — — — —
Isolated Hill Feature that does not take a contour	— — — — —
Cultivation	— — — — —
Smooth Rock	— — — — —
Mining or Prospecting Trench, Mine Dump, Quarry or Excavation	— — — — —
Very Dense Bush, Dense Bush	— — — — —
Medium Bush	— — — — —
Sparse Bush, Open Grassland	— — — — —
Orchard or Plantation	— — — — —