

Centre Number	Candidate Number	Name
---------------	------------------	------

UNIVERSITY OF CAMBRIDGE INTERNATIONAL EXAMINATIONS
 General Certificate of Education
 Advanced Subsidiary Level and Advanced Level

BIOLOGY **9700/02**

Paper 2 Structured Questions AS May/June 2006

1 hour 15 minutes

Candidates answer on the Question Paper.
 No Additional Materials are required.

READ THESE INSTRUCTIONS FIRST

Write your Centre number, candidate number and name in the spaces provided at the top of this page.
 Write in dark blue or black pen in the spaces provided on the Question Paper.
 You may use a soft pencil for any diagrams, graphs, or rough working.
 Do not use staples, paper clips, highlighters, glue or correction fluid.

Answer **all** questions.
 The number of marks is given in brackets [] at the end of each question or part question.

For Examiner's Use	
1	
2	
3	
4	
5	
TOTAL	

Answer **all** the questions.

- 1 Fig. 1.1 is a drawing made from an electron micrograph of a longitudinal section of a capillary in muscle tissue.

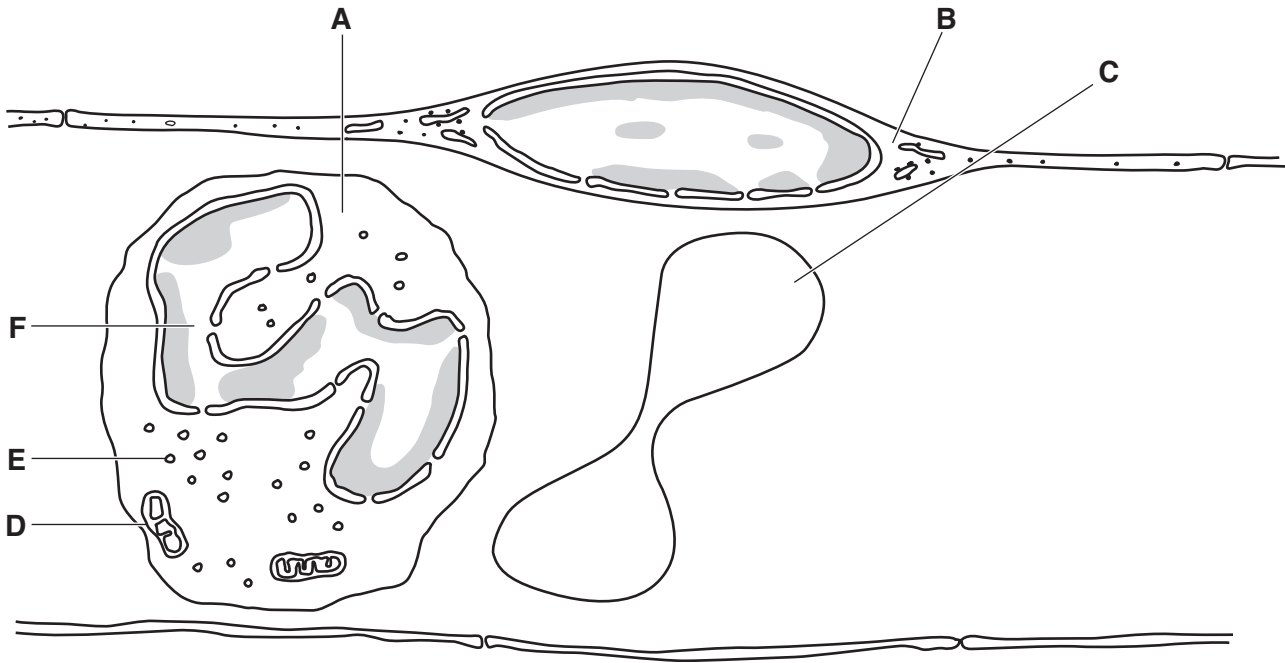


Fig. 1.1

× 8000

- (a) Complete the table below using the information in Fig. 1.1 to help you.

	cell A	cell B	cell C
name of cell			red blood cell
function of cell	ingest bacteria	permit exchange of gases	
diameter / μm		20	7

[4]

- (b) Name the organelles D, E and F.

D

E

F [3]

(c) Explain how oxygen and glucose move from the blood inside the capillary to the tissue fluid in the muscle.

oxygen

.....

.....

glucose

.....

.....[3]

(d) Describe how the **structure** of the **wall** of a vein differs from that of a capillary.

.....

.....

.....

.....

.....

.....[3]

[Total: 13]

- 2 Fig. 2.1 shows part of a summer squash, *Cucurbita pepo*. Fig. 2.2 is a high power drawing of an area of phloem from a transverse section of the stem of *C. pepo*.

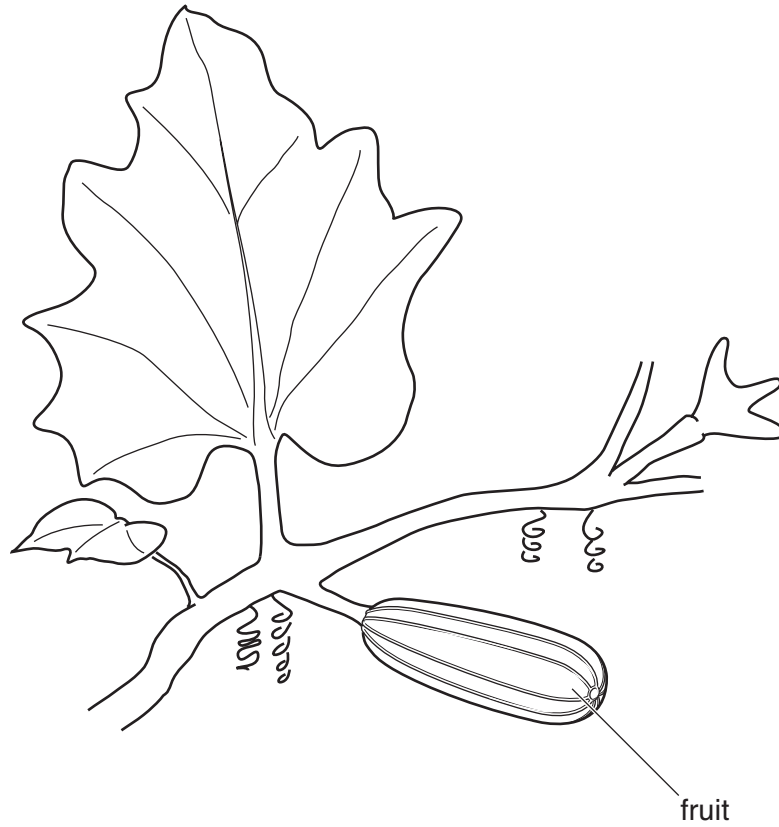


Fig. 2.1

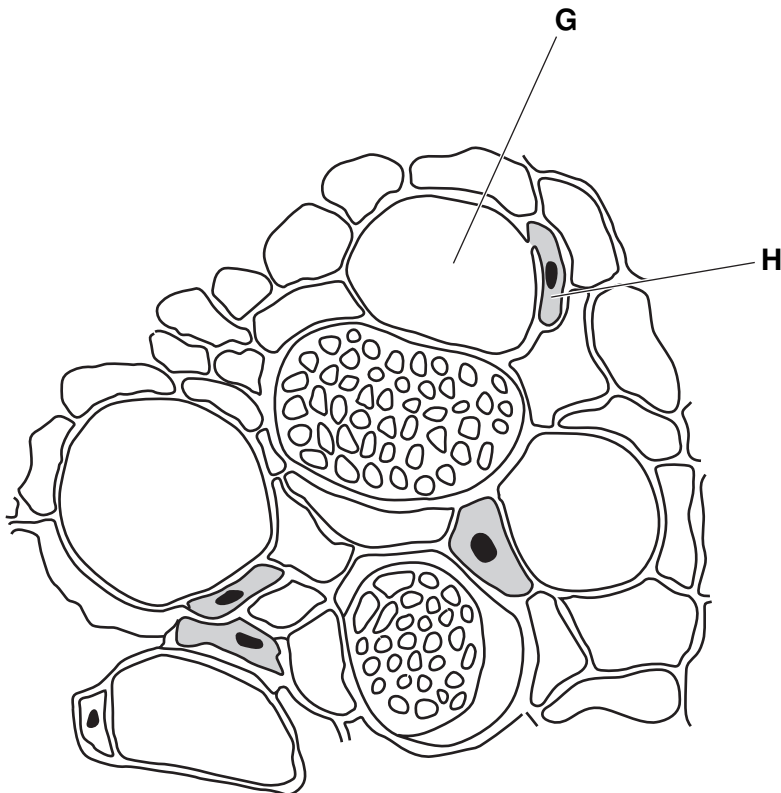


Fig. 2.2

(a) (i) Name **G** and **H**.

G

H[1]

(ii) Describe three ways in which the **structure** of a xylem vessel differs from the structure of cell **G**.

1.

2.

3.[3]

(b) The liquid extracted from the phloem of *C. pepo* contains sucrose.

Explain how sucrose is transported in the phloem along the stem from the leaf to the fruit.

.....
.....
.....
.....
.....
.....
.....
.....
.....
.....[4]

(c) Most of the sucrose transported in the phloem enters the fruit.

Suggest why summer squash fruits are not sweet.

.....
.....[1]

[Total: 9]

- 3 (a) Complete the table by indicating with a tick (✓) or a cross (✗) whether the statements apply to proteins, DNA, messenger RNA and cellulose.

You should put a tick or a cross in each box of the table.

statement	protein	DNA	messenger RNA	cellulose
hydrogen bonds stabilise the molecule				
glucose is the subunit molecule				
subunits are joined by peptide bonds				
may be hydrolysed to amino acids				
contains uracil				

[5]

BLANK PAGE

Question 3 continues on page 8

During an immune response, B-lymphocytes become plasma cells and begin to make polypeptides that are assembled into antibodies.

Fig. 3.1 is a diagram showing the formation of a polypeptide at a ribosome in a plasma cell.

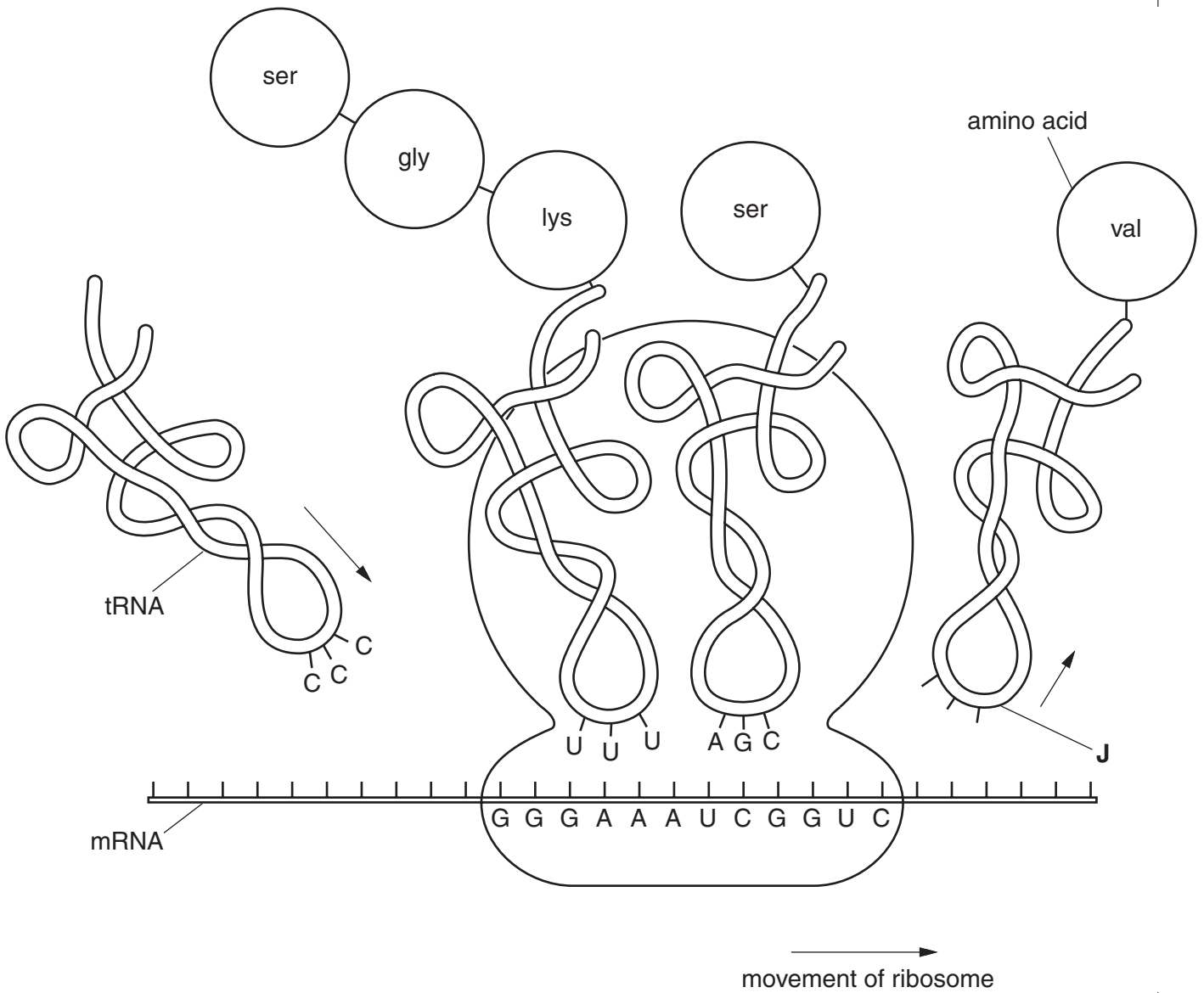


Fig. 3.1

(b) State the sequence of bases at **J**.

.....[1]

- 4 Fig. 4.1 is an electron micrograph of a chloroplast from a mesophyll cell in a leaf.

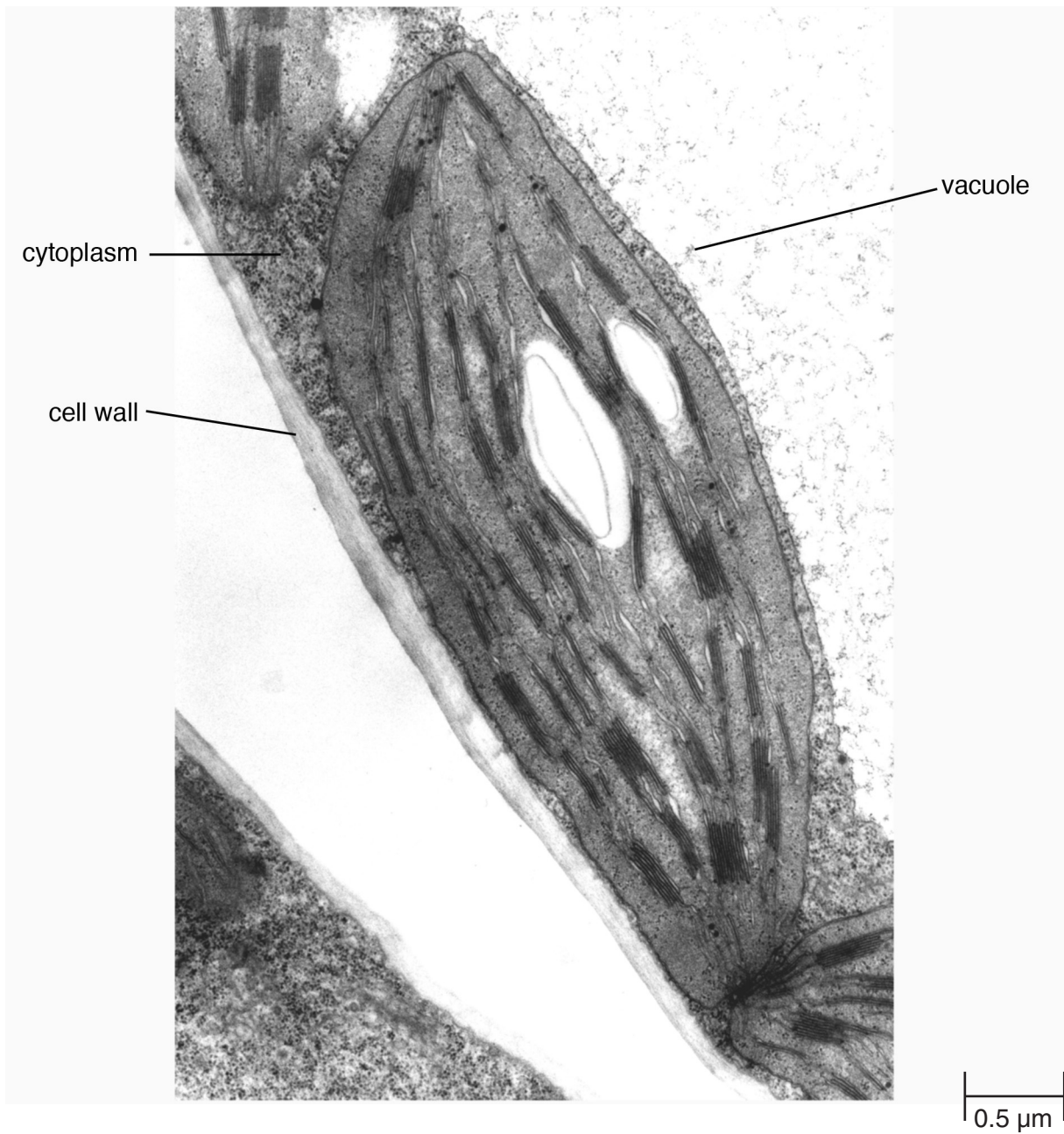


Fig. 4.1

- (a) Calculate the magnification of the electron micrograph in Fig. 4.1.

Answer =[1]

(b) State two features **visible in Fig. 4.1** that identify the organelle shown as a chloroplast.

1.

2.[2]

(c) Chloroplasts absorb phosphate ions from the surrounding cytoplasm. Suggest one way in which chloroplasts use phosphate ions.

.....[1]

(d) Starch grains in plant cells contain both amylose and amylopectin.

Explain how **both** of these substances are formed from glucose in plant cells.

.....
.....
.....
.....
.....
.....
.....
.....
.....
.....
.....[4]

(e) State three functions of the water stored in the vacuoles of plant cells.

1.

2.

3.[3]

[Total: 11]

- (b) The student made some conclusions about the results from the test-tubes. Match the statements to the reaction mixtures, **1** to **6**. You may use the numbers once, more than once or not at all.

(i) 'No reaction took place because urease was denatured.' [1]

(ii) 'There was no reaction because there was no substrate for urease.' [1]

(iii) 'The reaction did not occur because there was an inhibitor present.' [1]

Thiourea has a molecular structure that is very similar to that of urea. The student designed an experiment to find out whether thiourea is a competitive inhibitor. The student set up several reaction mixtures like **1** using increasing concentrations of urea. The student determined the initial rate of the reaction for urease at each concentration of urea. The results are shown in Fig. 5.1.

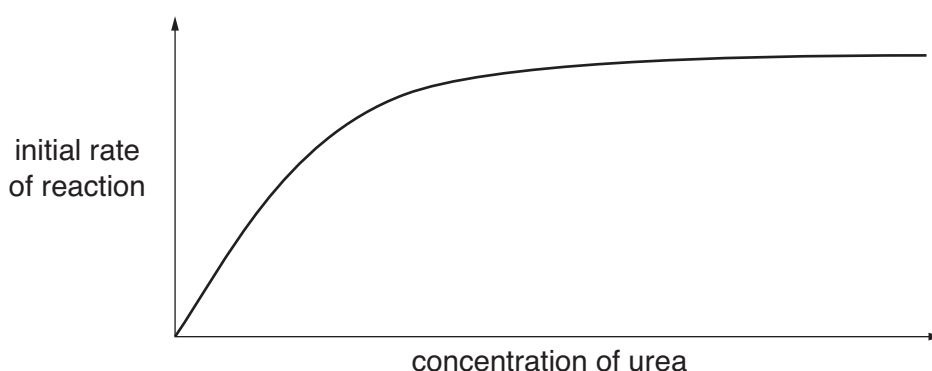


Fig. 5.1

The student then repeated the experiment using the same concentrations of urea. However, the student added the same volume and concentration of a thiourea solution to each test-tube in place of the water.

- (c) Sketch a curve on Fig. 5.1 to show the results that the student would expect if thiourea acts as a competitive inhibitor of urease. [2]
- (d) Explain why it is important to determine the **initial** rate of reaction when investigating the effect of a competitive inhibitor on an enzyme.

.....

.....

.....

..... [2]

[Total: 10]

Permission to reproduce items where third-party owned material protected by copyright is included has been sought and cleared where possible. Every reasonable effort has been made by the publisher (UCLES) to trace copyright holders, but if any items requiring clearance have unwittingly been included, the publisher will be pleased to make amends at the earliest possible opportunity.

University of Cambridge International Examinations is part of the University of Cambridge Local Examinations Syndicate (UCLES), which is itself a department of the University of Cambridge.