

**MATHEMATICS**

**9709/42**

Paper 4 Mechanics 1 (M1)

**May/June 2015**

**1 hour 15 minutes**

Additional Materials: Answer Booklet/Paper  
Graph Paper  
List of Formulae (MF9)



**READ THESE INSTRUCTIONS FIRST**

If you have been given an Answer Booklet, follow the instructions on the front cover of the Booklet.

Write your Centre number, candidate number and name on all the work you hand in.

Write in dark blue or black pen.

You may use an HB pencil for any diagrams or graphs.

Do not use staples, paper clips, glue or correction fluid.

DO **NOT** WRITE IN ANY BARCODES.

Answer **all** the questions.

Give non-exact numerical answers correct to 3 significant figures, or 1 decimal place in the case of angles in degrees, unless a different level of accuracy is specified in the question.

Where a numerical value for the acceleration due to gravity is needed, use  $10 \text{ m s}^{-2}$ .

The use of an electronic calculator is expected, where appropriate.

You are reminded of the need for clear presentation in your answers.

At the end of the examination, fasten all your work securely together.

The number of marks is given in brackets [ ] at the end of each question or part question.

The total number of marks for this paper is 50.

Questions carrying smaller numbers of marks are printed earlier in the paper, and questions carrying larger numbers of marks later in the paper.

This document consists of 4 printed pages.

- 1 One end of a light inextensible string is attached to a block. The string makes an angle of  $60^\circ$  above the horizontal and is used to pull the block in a straight line on a horizontal floor with acceleration  $0.5 \text{ m s}^{-2}$ . The tension in the string is  $8 \text{ N}$ . The block starts to move with speed  $0.3 \text{ m s}^{-1}$ . For the first  $5 \text{ s}$  of the block's motion, find
- (i) the distance travelled, [2]
  - (ii) the work done by the tension in the string. [2]
- 2 The total mass of a cyclist and his cycle is  $80 \text{ kg}$ . The resistance to motion is zero.
- (i) The cyclist moves along a horizontal straight road working at a constant rate of  $P \text{ W}$ . Find the value of  $P$  given that the cyclist's speed is  $5 \text{ m s}^{-1}$  when his acceleration is  $1.2 \text{ m s}^{-2}$ . [2]
  - (ii) The cyclist moves up a straight hill inclined at an angle  $\alpha$ , where  $\sin \alpha = 0.035$ . Find the acceleration of the cyclist at an instant when he is working at a rate of  $450 \text{ W}$  and has speed  $3.6 \text{ m s}^{-1}$ . [3]
- 3 A plane is inclined at an angle of  $\sin^{-1}(\frac{1}{8})$  to the horizontal.  $A$  and  $B$  are two points on the same line of greatest slope with  $A$  higher than  $B$ . The distance  $AB$  is  $12 \text{ m}$ . A small object  $P$  of mass  $8 \text{ kg}$  is released from rest at  $A$  and slides down the plane, passing through  $B$  with speed  $4.5 \text{ m s}^{-1}$ . For the motion of  $P$  from  $A$  to  $B$ , find
- (i) the increase in kinetic energy of  $P$  and the decrease in potential energy of  $P$ , [3]
  - (ii) the magnitude of the constant resisting force that opposes the motion of  $P$ . [2]
- 4 A particle  $P$  moves in a straight line. At time  $t$  seconds after starting from rest at the point  $O$  on the line, the acceleration of  $P$  is  $a \text{ m s}^{-2}$ , where  $a = 0.075t^2 - 1.5t + 5$ .
- (i) Find an expression for the displacement of  $P$  from  $O$  in terms of  $t$ . [4]
  - (ii) Hence find the time taken for  $P$  to return to the point  $O$ . [3]
- 5 A particle  $P$  starts from rest at a point  $O$  on a horizontal straight line.  $P$  moves along the line with constant acceleration and reaches a point  $A$  on the line with a speed of  $30 \text{ m s}^{-1}$ . At the instant that  $P$  leaves  $O$ , a particle  $Q$  is projected vertically upwards from the point  $A$  with a speed of  $20 \text{ m s}^{-1}$ . Subsequently  $P$  and  $Q$  collide at  $A$ . Find
- (i) the acceleration of  $P$ , [4]
  - (ii) the distance  $OA$ . [2]

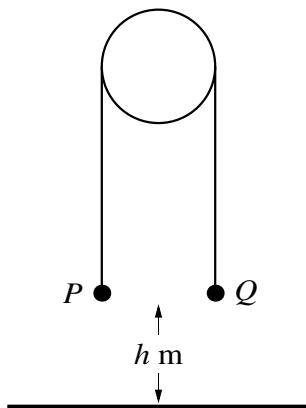


Fig. 1

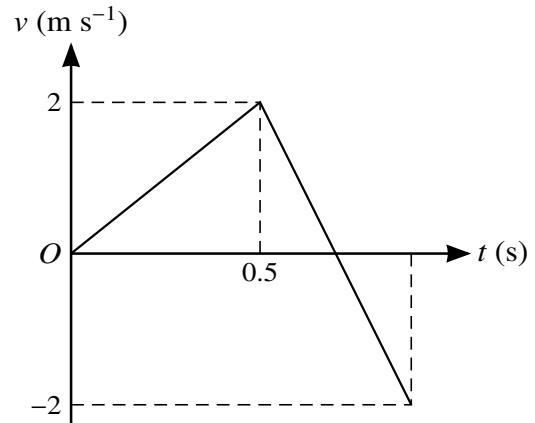
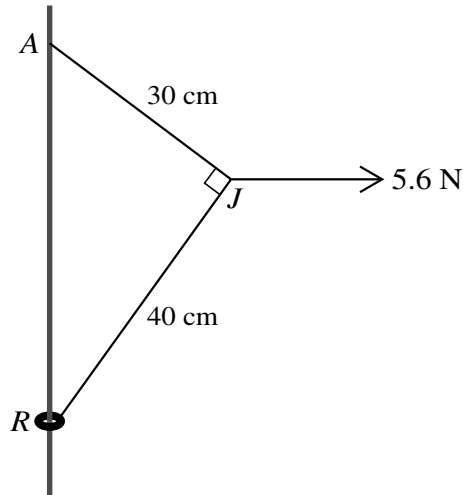


Fig. 2

Two particles  $P$  and  $Q$  have masses  $m$  kg and  $(1 - m)$  kg respectively. The particles are attached to the ends of a light inextensible string which passes over a smooth fixed pulley.  $P$  is held at rest with the string taut and both straight parts of the string vertical.  $P$  and  $Q$  are each at a height of  $h$  m above horizontal ground (see Fig. 1).  $P$  is released and  $Q$  moves downwards. Subsequently  $Q$  hits the ground and comes to rest. Fig. 2 shows the velocity-time graph for  $P$  while  $Q$  is moving downwards or is at rest on the ground.

- (i) Find the value of  $h$ . [2]
- (ii) Find the value of  $m$ , and find also the tension in the string while  $Q$  is moving. [6]
- (iii) The string is slack while  $Q$  is at rest on the ground. Find the total time from the instant that  $P$  is released until the string becomes taut again. [3]

[Question 7 is printed on the next page.]



A small ring  $R$  is attached to one end of a light inextensible string of length 70 cm. A fixed rough vertical wire passes through the ring. The other end of the string is attached to a point  $A$  on the wire, vertically above  $R$ . A horizontal force of magnitude 5.6 N is applied to the point  $J$  of the string 30 cm from  $A$  and 40 cm from  $R$ . The system is in equilibrium with each of the parts  $AJ$  and  $JR$  of the string taut and angle  $AJR$  equal to  $90^\circ$  (see diagram).

- (i) Find the tension in the part  $AJ$  of the string, and find the tension in the part  $JR$  of the string. [5]

The ring  $R$  has mass 0.2 kg and is in limiting equilibrium, on the point of moving up the wire.

- (ii) Show that the coefficient of friction between  $R$  and the wire is 0.341, correct to 3 significant figures. [4]

A particle of mass  $m$  kg is attached to  $R$  and  $R$  is now in limiting equilibrium, on the point of moving down the wire.

- (iii) Given that the coefficient of friction is unchanged, find the value of  $m$ . [3]

Permission to reproduce items where third-party owned material protected by copyright is included has been sought and cleared where possible. Every reasonable effort has been made by the publisher (UCLES) to trace copyright holders, but if any items requiring clearance have unwittingly been included, the publisher will be pleased to make amends at the earliest possible opportunity.

To avoid the issue of disclosure of answer-related information to candidates, all copyright acknowledgements are reproduced online in the Cambridge International Examinations Copyright Acknowledgements Booklet. This is produced for each series of examinations and is freely available to download at [www.cie.org.uk](http://www.cie.org.uk) after the live examination series.

Cambridge International Examinations is part of the Cambridge Assessment Group. Cambridge Assessment is the brand name of University of Cambridge Local Examinations Syndicate (UCLES), which is itself a department of the University of Cambridge.