

## UNIVERSITY OF CAMBRIDGE INTERNATIONAL EXAMINATIONS

International General Certificate of Secondary Education

### MARK SCHEME for the May/June 2006 question paper

#### 0580 and 0581 MATHEMATICS

0580/03 and 0581/03 Paper 3, maximum raw mark 104

These mark schemes are published as an aid to teachers and students, to indicate the requirements of the examination. They show the basis on which Examiners were initially instructed to award marks. They do not indicate the details of the discussions that took place at an Examiners' meeting before marking began. Any substantial changes to the mark scheme that arose from these discussions will be recorded in the published *Report on the Examination*.

All Examiners are instructed that alternative correct answers and unexpected approaches in candidates' scripts must be given marks that fairly reflect the relevant knowledge and skills demonstrated.

Mark schemes must be read in conjunction with the question papers and the *Report on the Examination*.

The minimum marks in these components needed for various grades were previously published with these mark schemes, but are now instead included in the *Report on the Examination* for this session.

- CIE will not enter into discussion or correspondence in connection with these mark schemes.

CIE is publishing the mark schemes for the May/June 2006 question papers for most IGCSE and GCE Advanced Level and Advanced Subsidiary Level syllabuses and some Ordinary Level syllabuses.



Page 1	Mark Scheme	Syllabus	Paper
	IGCSE – May/June 2006	0580 and 0581	03

Question	Answer	Marks	Comments	
1 (a)(i)	translation	1	must be a single transformation not translation etc.	
	(-7)	1	accept in words 7 left	
	(-4)	1	accept in words 4 down	
1 (a)(ii)	enlargement	1	must be a single transformation	
	S.F = 3	1		
	centre (0,0)	1		
1 (b)	correct rotation	2	SC1 for any rotation of 90 anticlockwise or SC1 for correct rotation of 90 clockwise	
1 (c)	correct reflection	2	SC 1 for any reflection in $y=k$ or SC 1 for correct reflection in $x=-2$	
				10
2 (a)	141 cao	2	M1 for $\pi \times 1.5^2 \times 20$ (imp.by 141.3.....)	
2 (b)	2 h 56 or 2 h 57	3	SC 2 for 176 to 177 mins M1 for (a) / 0.8 SC 1 for ft time in mins correctly changed to hours and minutes. ( if more than 1 hour )	
2 (c)	36 cao	2	M1 for 12 seen as length of box	
2 (d)(i)	8.6(0) cao	2	M1 for $96 \times 0.35 - 25$ or $96 \times 35 - 2500$	
2 (d)(ii)	34.4 or 34	3ft	ft is (d)(i) $\times 4$ M1 for (d)(i) / 25 M1 (dep) for $\times 100$	
				12

Page 2	Mark Scheme	Syllabus	Paper
	IGCSE – May/June 2006	0580 and 0581	03

3 (a)	$4p - 3q$	2	SC1 for either $4p$ or $-3q$ seen	
3 (b)	7 cao	3	M1 for $2x - 5 = 9$ or $6x - 15 = 27$ M1 for $2x = 14$ or $6x = 42$	
3 (c)(i)	$2j + 2k$	1	or $2(j + k)$ or $j + j + k + k$	
3 (c)(ii)	(c)(i) = 72	1ft		
3 (c)(iii)	24 cao	2	M1 for substitution of $k=2j$ or $j=k/2$ implied by $6j=72$ , $3j=36$ , ans of 12, $3k=72$	
3 (d)	numerator = $1/6$	B1		
	$\times 2$	M1	or dividing by $3/6$	
	$1/3$	A1	SC1 for ans of $1/3$ without working	
3 (d)(ii)	$wr + t$	2	M1 for $wr = s - t$	
				14
4 (a)	16, 21, 26	3	1, 1, 1	
4 (b)	101	2	M1 for $5 \times 20 + 1$ sol.	
4 (c)	$5n + 1$	2	SC1 for $5n + k$ seen	
4 (d)	37	2	M1 for $-1$ then $/5$ or SC1 ft from (c) = 186 correctly solved.	9

Page 3	Mark Scheme	Syllabus	Paper
	IGCSE – May/June 2006	0580 and 0581	03

5 (a)	200	2	M1 for distance / time	
5 (b)(i)	2 squares hori. parallel line to 470	1 1	indep.	
5 (b)(ii)	09 33	1ft	correct time or ft from graph (b)(i) allow + or - 3 mins	
5 (c)(i)	start at ( 0730 , 470 ) end at ( 0945 , 0 )	1 1	but must be a straight line	
5 (c)(ii)	280	1ft	ft from graph allow + or - 5 km.	
5 (c)(iii)	208 to 209	2	M1 for distance / time	10
6 (a)(i)	163.4 or 163	2	M1 for sum of heights / 10	
6 (a)(ii)	24	2	SC1 for both 178 and 154 seen	
6 (b)(i)	7 points plotted	P2	P1 for 5 or 6 correct	
6 (b)(ii)	line of best fit	L1	judge by eye	
6 (b)(iii)	height for 21cm	1	ft from their line of best fit	
6 (b)(iv)	positive	1		
6 (b)(v)	correct statement	1	larger hand span greater height or equiv.	10

Page 4	Mark Scheme	Syllabus	Paper
	IGCSE – May/June 2006	0580 and 0581	03

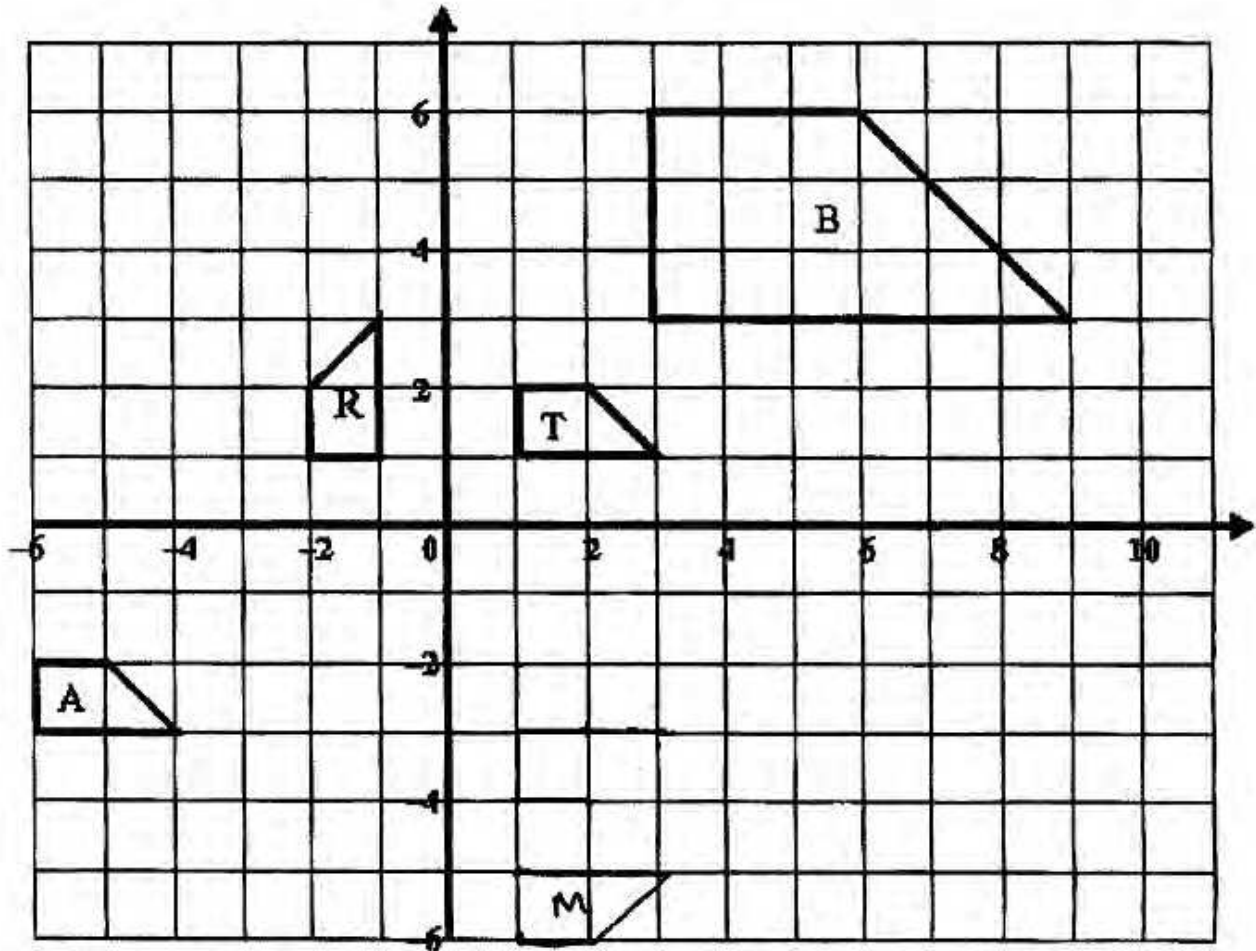
7 (a)	m	1		
7 (b)	$y = 2x + 5$	2	SC1 for 2x or 5 seen	
7 (c)	8, 12, 3	3	1, 1, 1	
7 (d)	9 points plotted	P2 ft	P1ft for 6,7 or 8 correct limit for accuracy is 1/2 small square	
	smooth curve drawn	C1	reasonable curve through the 9 correct points not dependent on P2	
7 (e)	( -3.8 , -2.7 )	1ft	allow + or - 0.1 ft is from their graph	
	( 1.8 , 8.7 )	1ft	allow + or - 0.1 ft is from their graph	
				11
8 (a)(i)	pentagon	1		
8 (a)(ii)	72	2	M1 for 360 / 5	
8 (a)(iii)	108	2ft	M1 ft for 180 - (a)(ii)	
8 (b)	(x=) 35	1		
	(y=) 64	2		
	(z=) 81	2	M1 for 180 - ( 35 + 64 ) oe. sol	
				10

Page 5	Mark Scheme	Syllabus	Paper
	IGCSE – May/June 2006	0580 and 0581	03

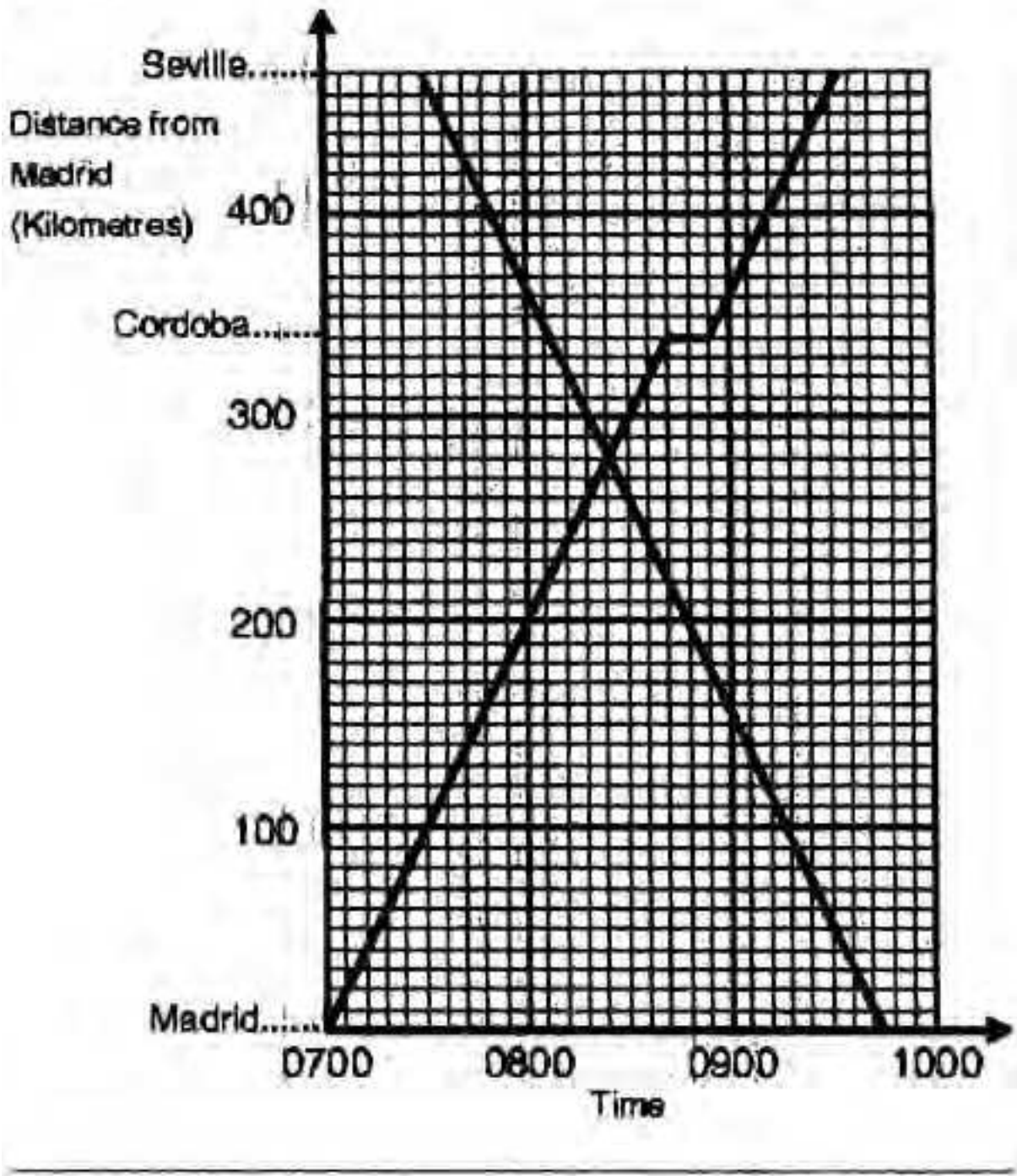
9 (a)(i)	85	1	allow + or - 1	
9 (a)(ii)	72	1	allow + or - 2	
9 (b)(i)	angle bisector constructed	2	must have correct arcs seen SC1 for any line from A to BC	
9 (b)(ii)	82 to 84	1ft	ft is length (+/- 1) from line in (b)(i)	
9 (c)	perpendicular bisector of AC	2	must have correct arcs seen allow +/- 0.1 and +/- 2 degrees SC1 if inaccurate or correct by eye without construction lines seen	
9 (d)	G	2ft	G placed anywhere in the correct region ft only from 2 lines creating a distinct region	9
10 (a)	p=40 , q=50	1	may be seen on the diagram	
10 (b)	37.4	2	M1 for $\tan ACB = 13/17$ oe or better	
10 (c)	21.4	2	M1 for $\sqrt{(13^2+17^2)}$ , $\sqrt{169+289}$ , $\sqrt{458}$	
10 (d)	110.5	2	allow 110 or 111 M1 for $0.5 \times 13 \times 17$	
10 (e)	272 to 273	2ft	ft is $310 - (b)$ M1 for $360 - (50 + (b))$ oe	9
				104

Diagram Solutions

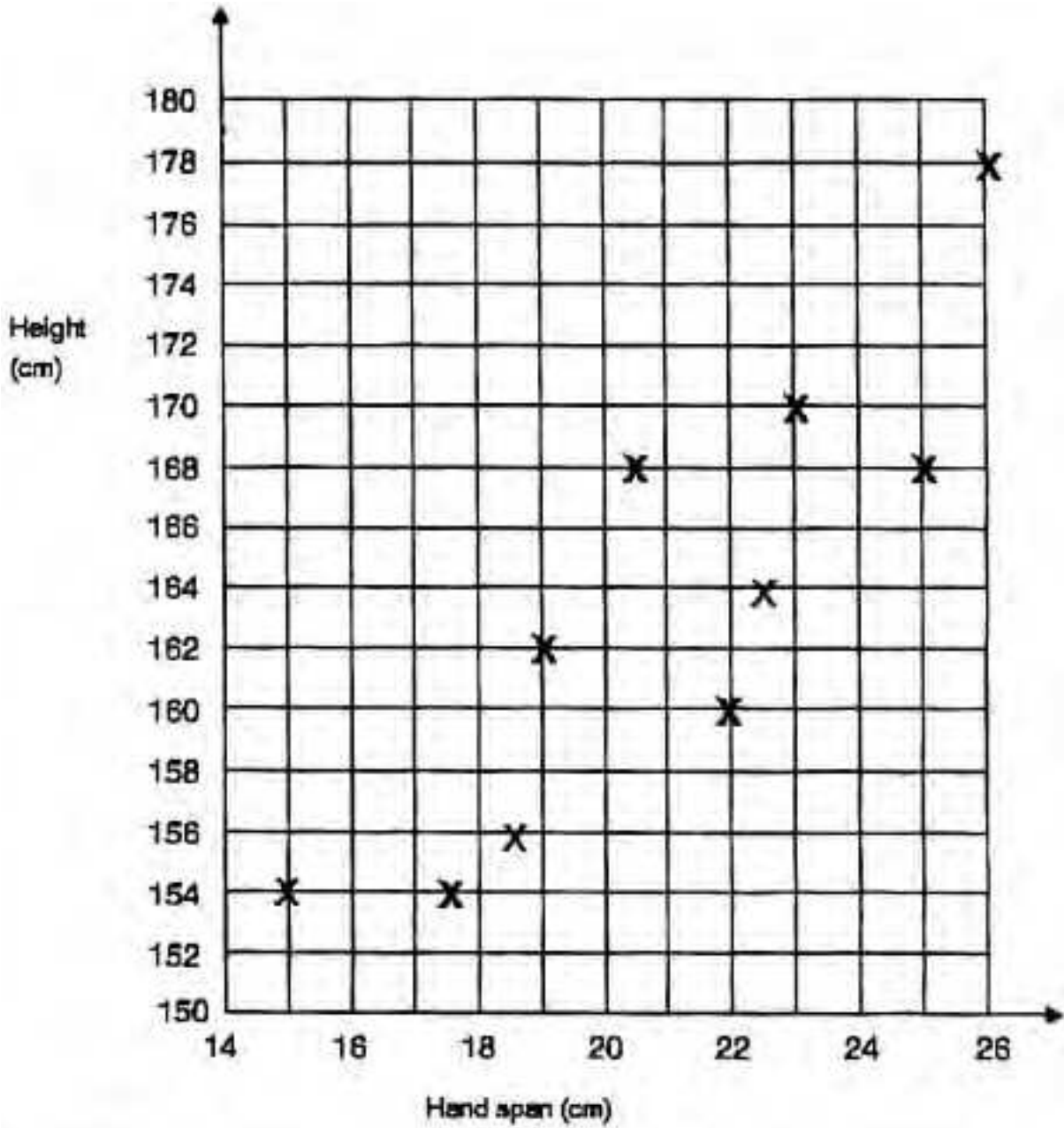
Question 1



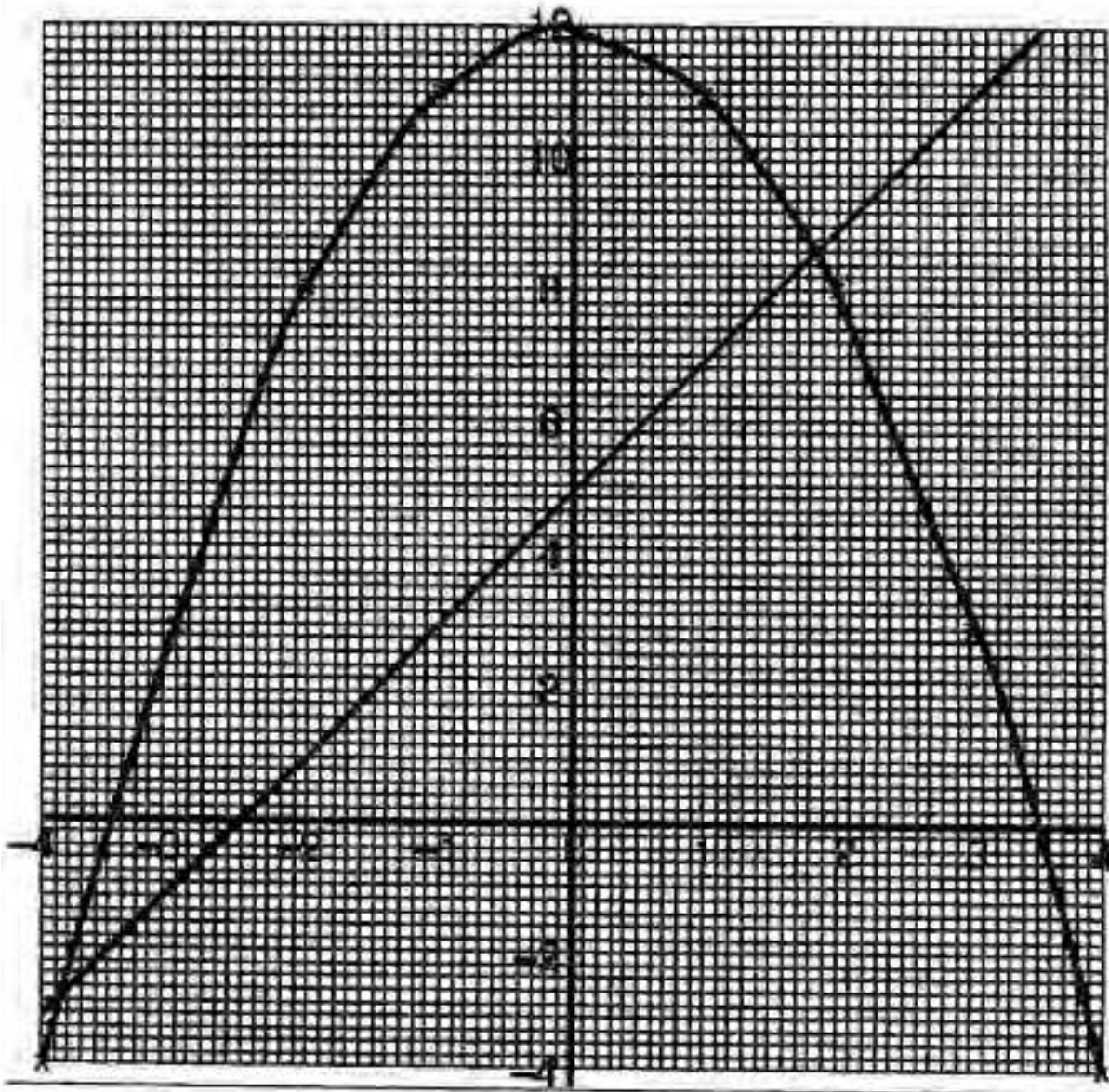
Question 5







Question 7



Page 10	Mark Scheme	Syllabus	Paper
	IGCSE – May/June 2006	0580 and 0581	03

**Question 9**

